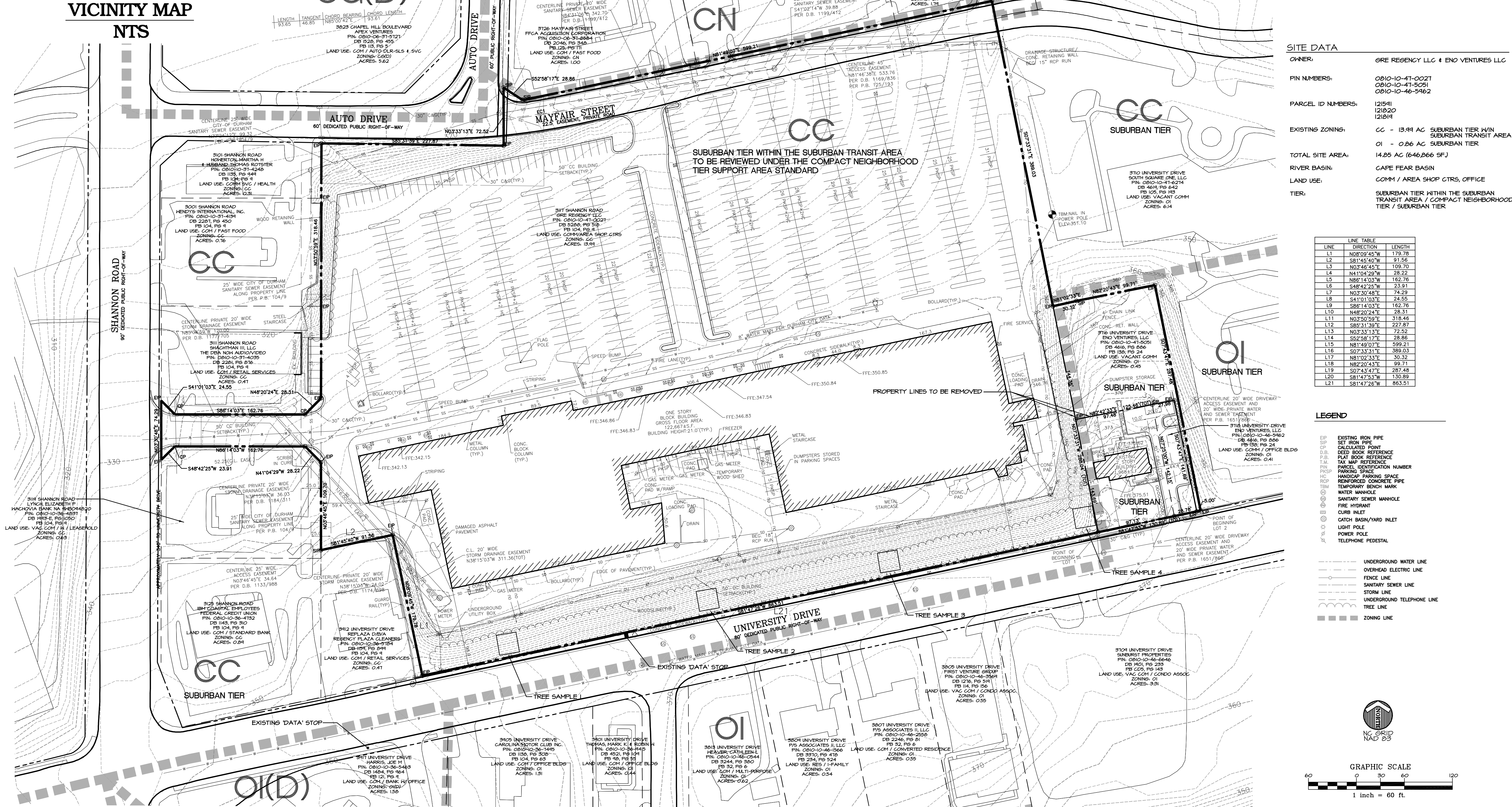


**VICINITY MAP  
NTS**

SAMPLE AREA 1 1" = 10' TREES 2" OR GREATER ARE SHOWN IN DETAIL	SAMPLE AREA 2 1" = 10' TREES 2" OR GREATER ARE SHOWN IN DETAIL	SAMPLE AREA 3 1" = 10' TREES 2" OR GREATER ARE SHOWN IN DETAIL	SAMPLE AREA 4 1" = 10' TREES 2" OR GREATER ARE SHOWN IN DETAIL
0 6" PINE 0 12" PINE 0 6" PINE 0 6" PINE 0 8" PINE 0 3" CEDAR 0 1" PINE 0 1" PINE	0 2" PINE 0 2" PINE 0 4" PINE 0 1" PINE 0 4" PINE 0 6" PINE 0 3" PINE 0 3" PINE 0 2" PINE 0 1" PINE 0 2" PINE 0 8" PINE	0 2" PINE 0 5" PINE 0 4" PINE 0 3" PINE 0 6" PINE 0 7" PINE 0 10" PINE 0 8" PINE 0 1" PINE 0 2" PINE	0 3" SWEETGUM 0 3" CEDAR 0 3" PINE 0 10" PINE 0 8" PINE 0 12" PINE 0 6" PINE

TREE SAMPLE AREA 1 25' X 25'	TREE SAMPLE AREA 2 25' X 25'	TREE SAMPLE AREA 3 25' X 25'	TREE SAMPLE AREA 4 25' X 25'
12" PINE (1) 9" PINE (1) 8" PINE (1) 7" PINE (2) 6" PINE (2) 3" CEDAR (1)	8" PINE (1) 7" PINE (2) 6" PINE (1) 4" PINE (2) 4" PINE (2) 3" PINE (2) 2" PINE (3)	10" PINE (1) 8" PINE (1) 7" PINE (1) 6" PINE (1) 5" PINE (1)	12" PINE (1) 10" PINE (1) 7" PINE (1) 6" PINE (1) 4" PINE (1) 3" CEDAR (1) 3" SWEETGUM (1)



- SITE GENERAL NOTES**
- TOPOGRAPHIC SURVEY INFORMATION FOR THE 14.85 ACRE SITE GATHERED FROM SURVEY PERFORMED BY TRIANGLE SURVEYORS DATED: 2003-5-21. TOPOGRAPHIC AND OTHER INFORMATION FOR THE ADDITIONAL AND ADJACENT PROPERTIES GATHERED FROM THE DURHAM COUNTY GIS ADAPTING SERVICE.
  - BOUNDARY SURVEY FOR THE TOTAL 14.85 ACRE SITE PERFORMED BY THE JOHN R. McADAMS COMPANY.
  - THERE IS NO FLOODWAY OR FLOODWAY FRINGE PRESENT ON SITE.
  - THERE ARE NO STREAMS OR RIVER BEDS ON SITE.
  - THIS SITE IS IN THE CAPE FEAR RIVER BASIN.
  - THIS SITE IS NOT IN A WATERSHED OVERLAY DISTRICT
  - THERE ARE NO STEEP SLOPES ON SITE AS DEFINED IN THE DURHAM U.D.
  - THERE ARE NO WETLANDS ON SITE.
  - THERE ARE NO NATURAL OR HISTORIC INVENTORY SITES ON THIS OR ADJOINING PROPERTIES.
  - APPROXIMATELY 13.91 ACRES OF THE SITE IS WITHIN THE SUBURBAN TRANSIT AREA/COMPACT NEIGHBORHOOD TIER.
  - A PLANNED STREET TRAIL CONNECTION ALONGS UNIVERSITY DRIVE IS ILLUSTRATED IN THE NEW HOPE CREEK GREENWAY STUDY AREA.
  - THERE ARE NO GREENWAY TRAILS PLANNED WITHIN THE PROJECT BOUNDARIES.
  - DATA SERVICE RUNS ALONG SHANNON ROAD AND UNIVERSITY DRIVE. TWO DATA STOPS ARE WITHIN LESS THAN A 1/4 MILE FROM THE PROPOSED PROJECT. (SEE THE EXISTING LOCATION OF THE DATA STOPS GRAPHICALLY SHOWN)

**SITE DATA**

OWNER: GRE REGENCY LLC & ENO VENTURES LLC

PIN NUMBERS: 0810-10-47-0021  
0810-10-47-5051  
0810-10-46-5462

PARCEL ID NUMBERS: 121541  
121820  
121814

EXISTING ZONING: CC - 13.91 AC SUBURBAN TIER W/IN SUBURBAN TRANSIT AREA  
O1 - 0.86 AC SUBURBAN TIER

TOTAL SITE AREA: 14.85 AC (646,266 SF)

RIVER BASIN: CAPE FEAR BASIN

LAND USE: COMM / AREA SHOP CTRS, OFFICE

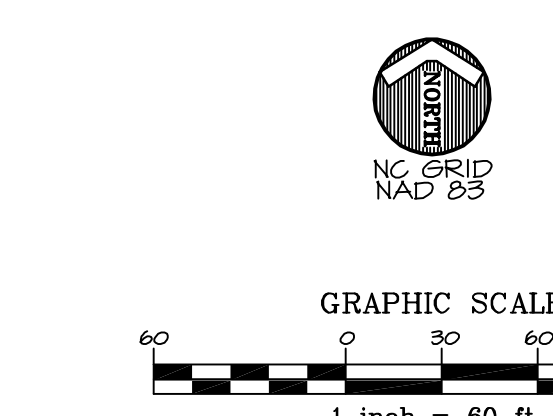
TIER: SUBURBAN TIER WITHIN THE SUBURBAN TRANSIT AREA / COMPACT NEIGHBORHOOD TIER / SUBURBAN TIER

**LINE TABLE**

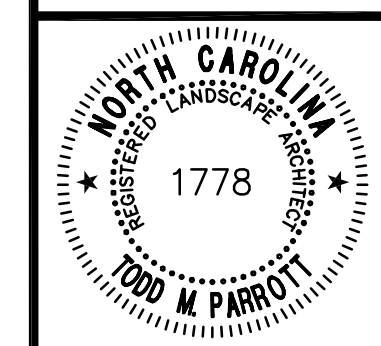
LINE	DIRECTION	LENGTH
L1	N08°09'45"W	179.78
L2	S81°45'40"W	91.56
L3	N03°46'45"E	119.70
L4	N41°04'29"W	28.22
L5	N86°14'03"W	162.76
L6	S48°42'25"W	23.91
L7	N03°30'48"E	74.29
L8	S41°01'03"E	24.55
L9	S86°14'03"E	162.76
L10	N48°20'24"E	28.31
L11	N03°50'59"E	318.46
L12	S85°31'39"E	227.87
L13	N03°33'13"E	72.52
L14	S52°58'17"E	28.86
L15	N81°49'07"E	599.21
L16	S07°33'31"E	389.03
L17	N81°02'33"E	33.32
L18	N82°20'43"E	99.71
L19	S07°43'47"E	287.48
L20	S81°47'53"W	150.89
L21	S81°47'26"W	863.51

- LEGEND**
- EXISTING IRON PIPE
  - SET IRON PIPE
  - CORRELATED POINT
  - DEED BOOK REFERENCE
  - PLAT BOOK REFERENCE
  - TAX MAP REFERENCE
  - PARCEL IDENTIFICATION NUMBER
  - HANDICAP PARKING SPACE
  - REINFORCED CONCRETE PIPE
  - TEMPORARY BENCH MARK
  - WATER MANHOLE
  - SANITARY SEWER MANHOLE
  - FIRE HYDRANT
  - CURB INLET
  - CATCH BASIN/YARD INLET
  - LIGHT POLE
  - POWER POLE
  - TELEPHONE PEDESTAL

- UNDERGROUND WATER LINE
- OVERHEAD ELECTRIC LINE
- FENCE LINE
- SANITARY SEWER LINE
- STORM LINE
- UNDERGROUND TELEPHONE LINE
- TREE LINE
- ZONING LINE



**THE JOHN R. McADAMS  
COMPANY, INC.**  
ENGINEERS/PLANNERS/SURVEYORS  
RESEARCH TRIANGLE PARK, NC  
P.O. BOX 14005 ZIP 27709-4005  
(919) 361-5000



REVISIONS:  
 2007-4-3  
 2007-5-1  
 2007-5-15  
 2007-XX-XX

OWNERS:  
 GRE REGENCY, LLC  
 GRE FOUR COPY PLACE  
 BOSTON, MA 02116  
 ENO VENTURES, LLC  
 1536 HERMITAGE COURT  
 DURHAM, NC 27707

**UNIVERSITY MARKETPLACE**  
DEVELOPMENT PLAN  
DURHAM, NORTH CAROLINA  
EXISTING CONDITIONS

PROJECT NO: HWC-06000  
 FILENAME: HWC06000-XC1  
 DESIGNED BY: TPL  
 DRAWN BY: TPL  
 SCALE: 1" = 60'  
 DATE: 01-08-07  
 SHEET NO: **XC-1**  
 McADAMS